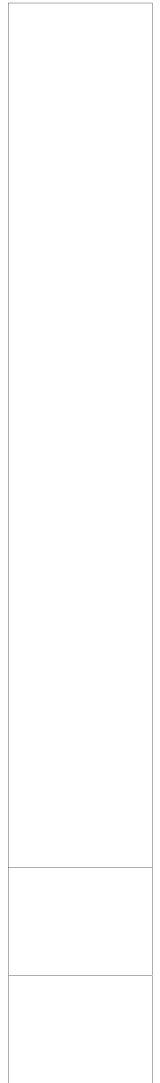


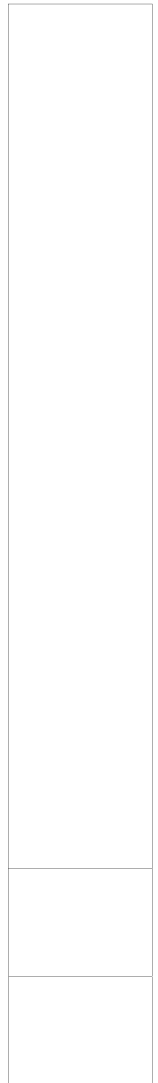
Tasks and classification of computer networks

Foundations of computer networks



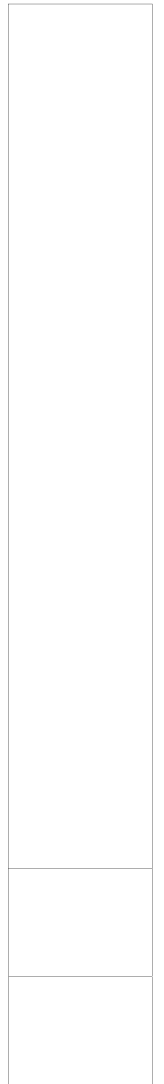
Tasks of LAN

- Sharing of physical resources
 - storage
 - printers
 - scanners
 - communication devices
- Sharing of logical resources
 - files
 - data
- Communication between users

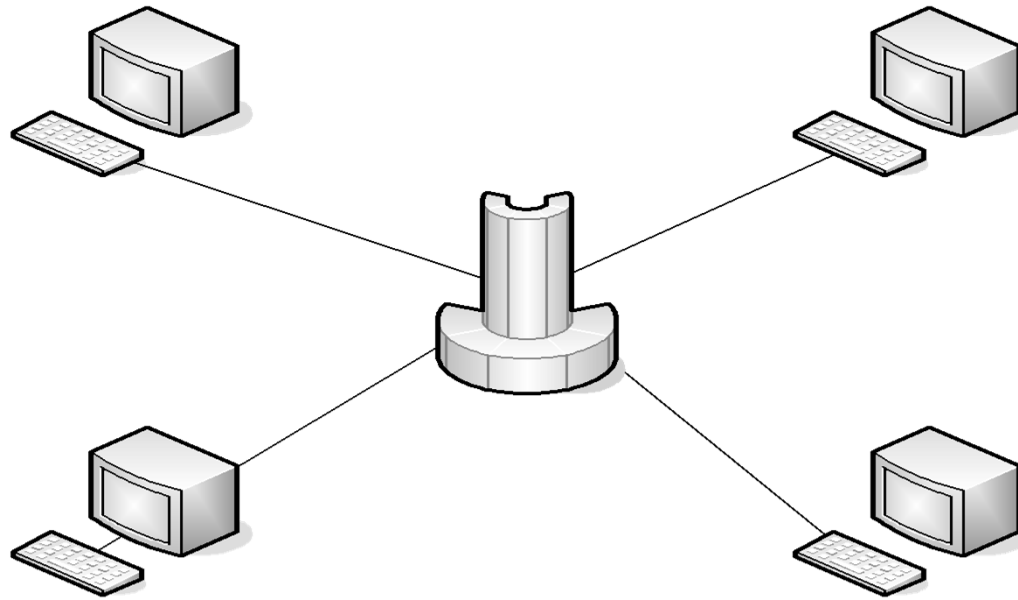


Network architectures

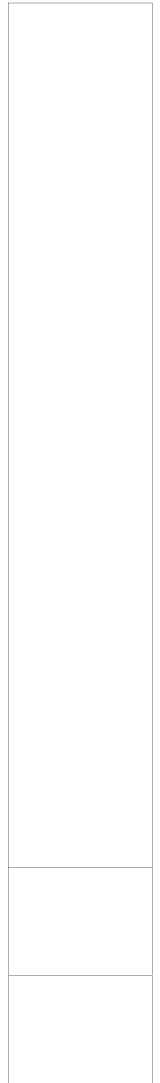
- Host – terminal
- Peer to peer
- Client – server



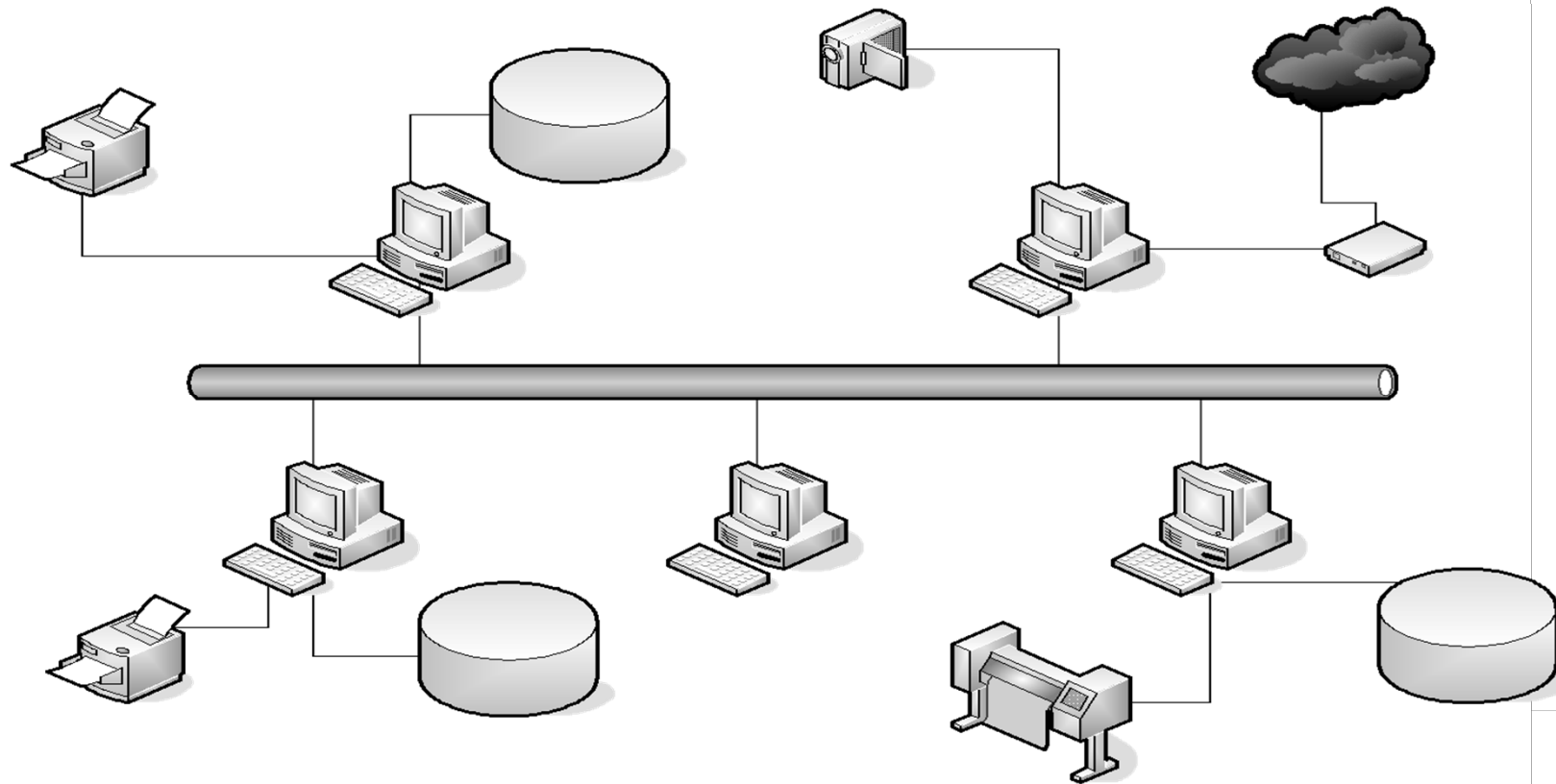
Host-terminal architectures



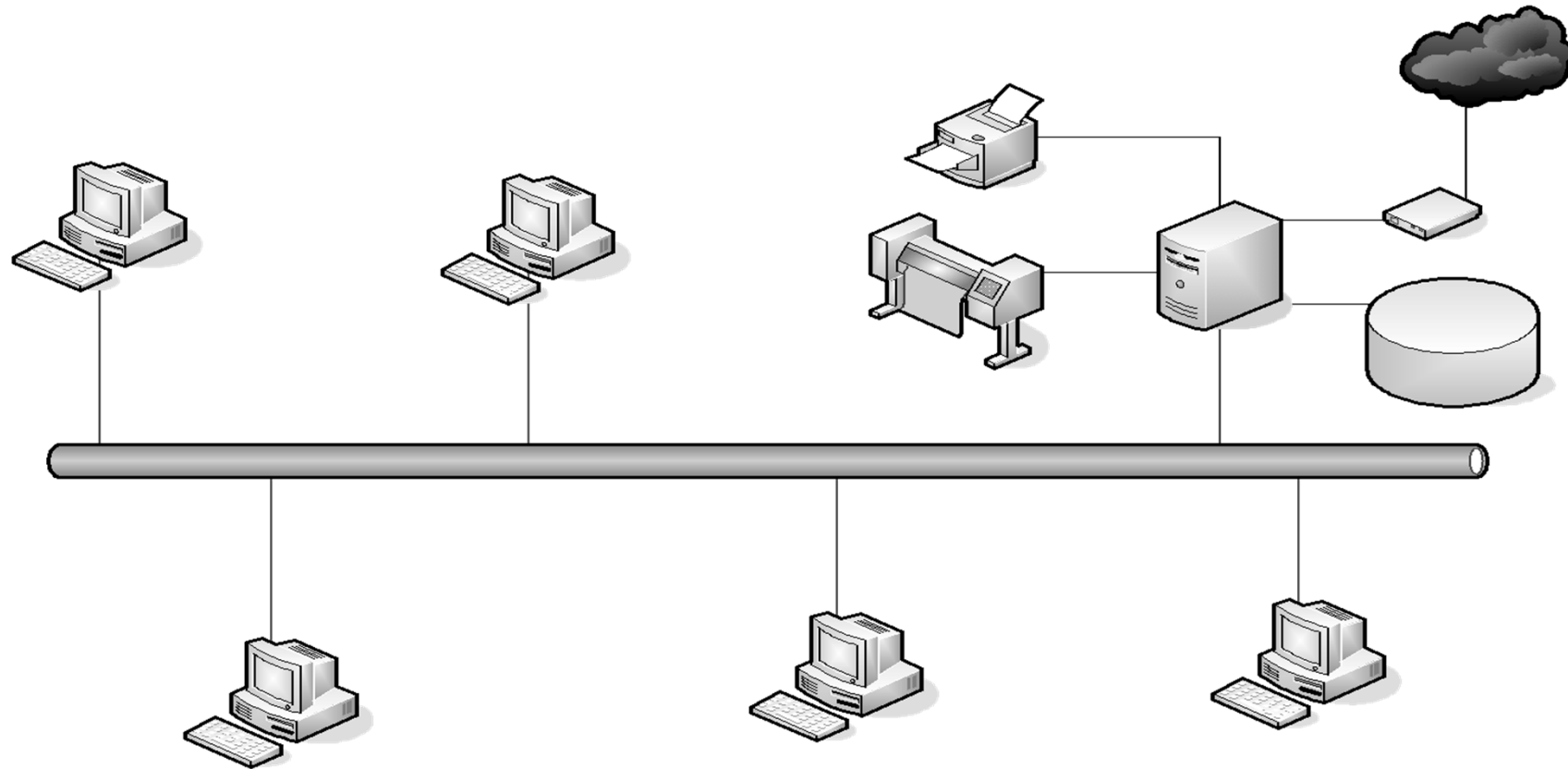
efficient use of resources



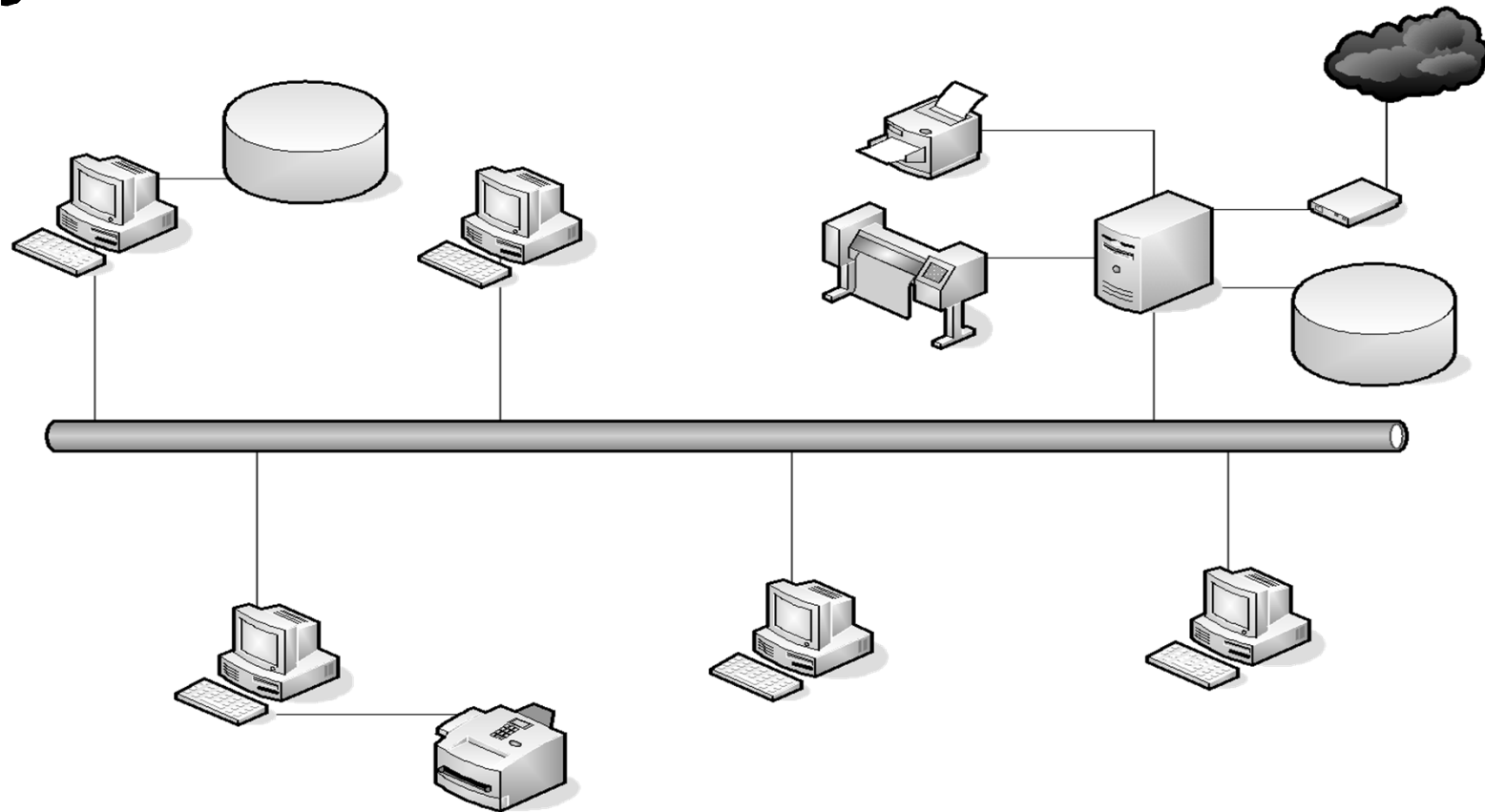
Peer to peer architecture



Client-server architecture

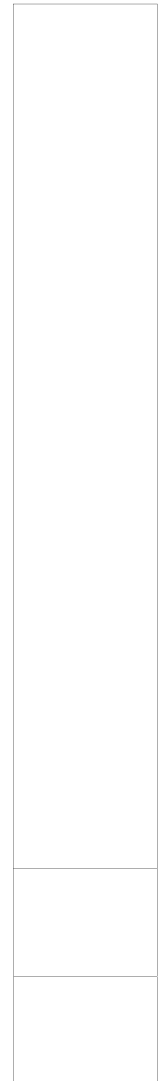
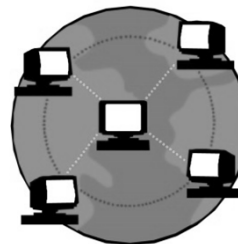
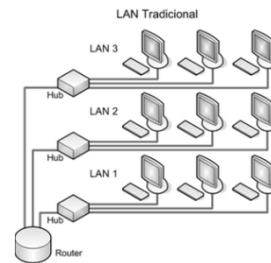


Hybrid architecture



Range (territorial)

- PAN (ang. *personal area network*)
- LAN (ang. *local area network*)
- MAN (ang. *metropolitan area network*)
- WAN (ang. *wide area network*)



Internetworks

