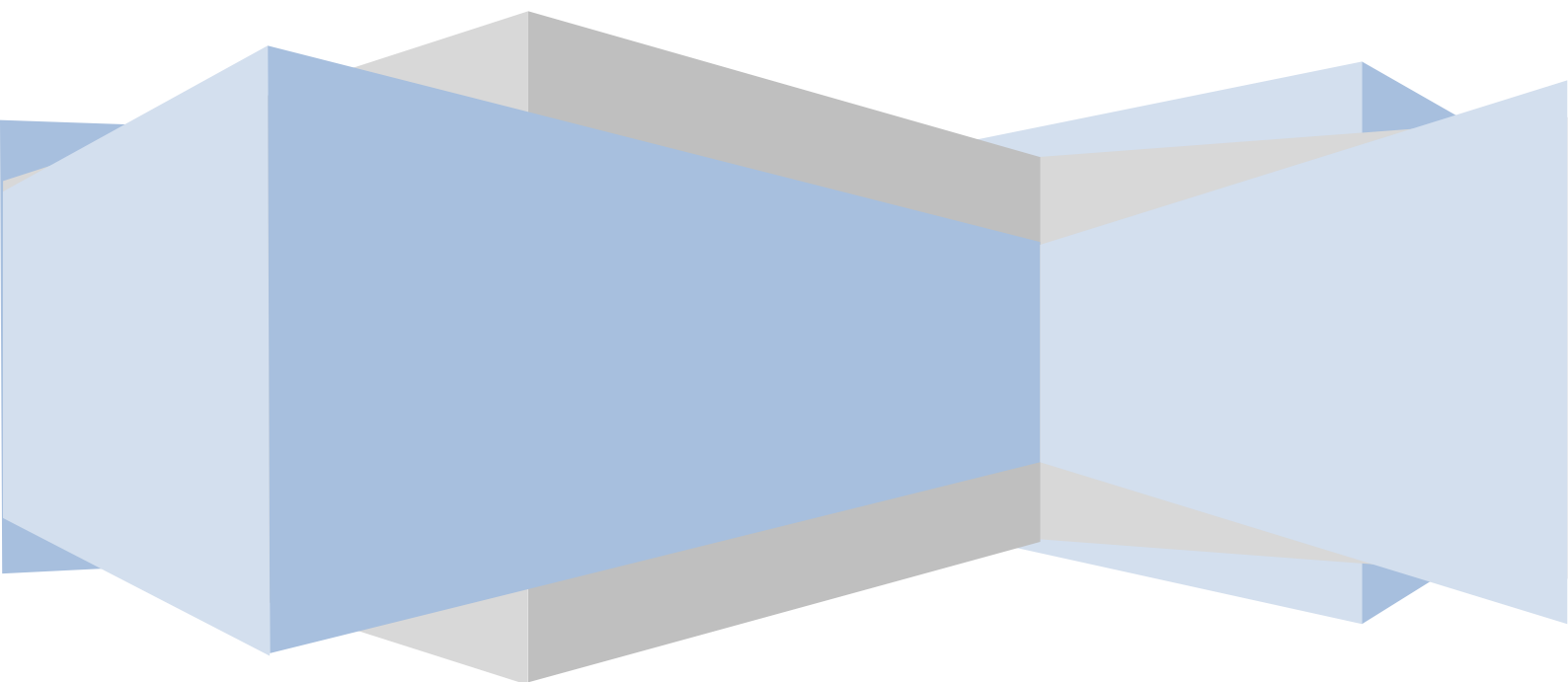


Department of Intelligent Computer Systems
Częstochowa University of Technology

The Wireshark – filters and statistics

Step by step

Foundations of computer networks laboratory



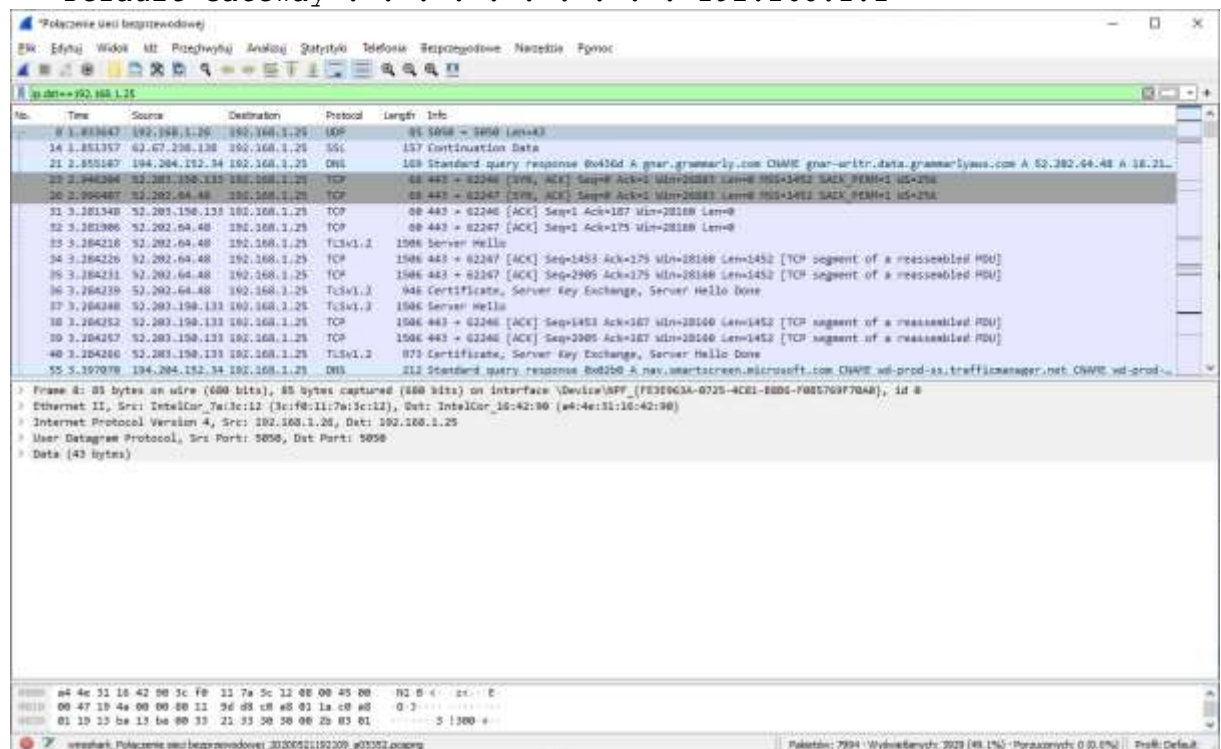
The Wireshark – filters and statistics

Course of exercise

Student should capture the huge number of frames from the network without capture filter. To do this, student should start the capturing and then run various programs that use network resources and diagnostic programs, e.g. web browser, e-mail client, ftp, ping, nslookup, net, search network resources Windows Explorer.

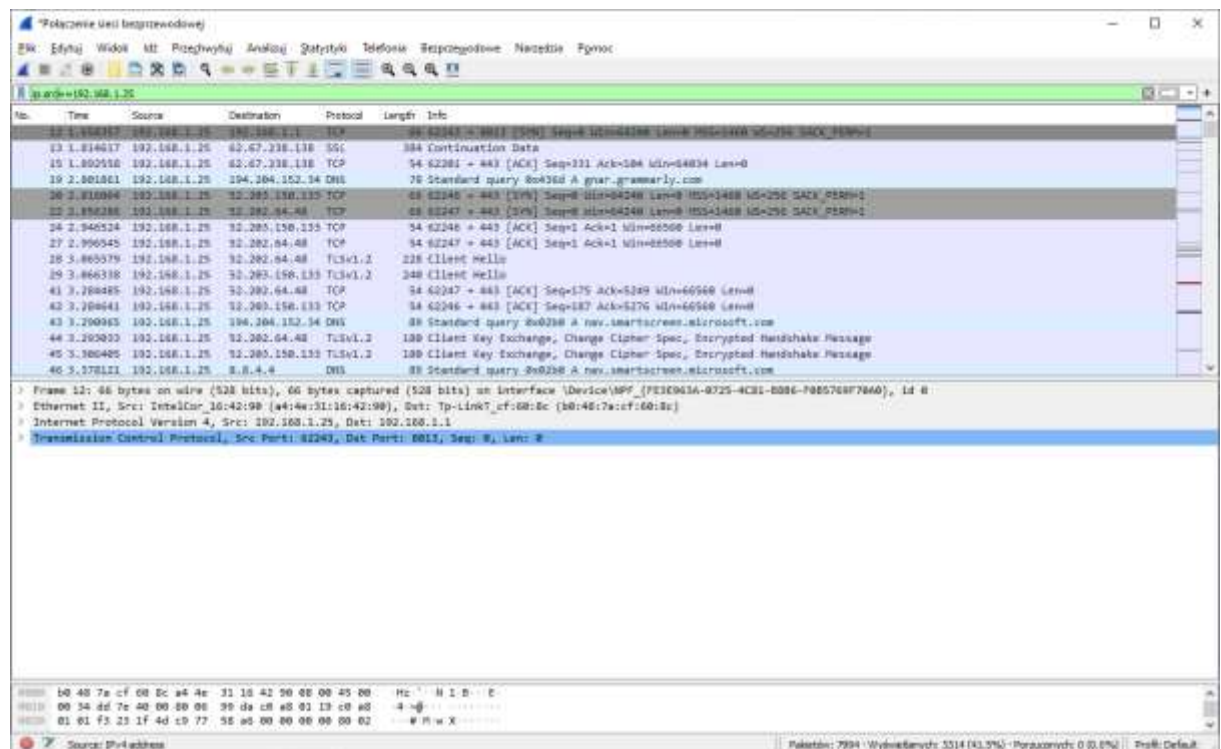
The filter under examination should allow to find the frames, which has been send to used (our) computer only

```
>ipconfig
Connection-specific DNS Suffix  . : 
IPv4 Address. . . . . : 192.168.1.25
Subnet Mask . . . . . : 255.255.255.0
Default Gateway . . . . . : 192.168.1.1
```

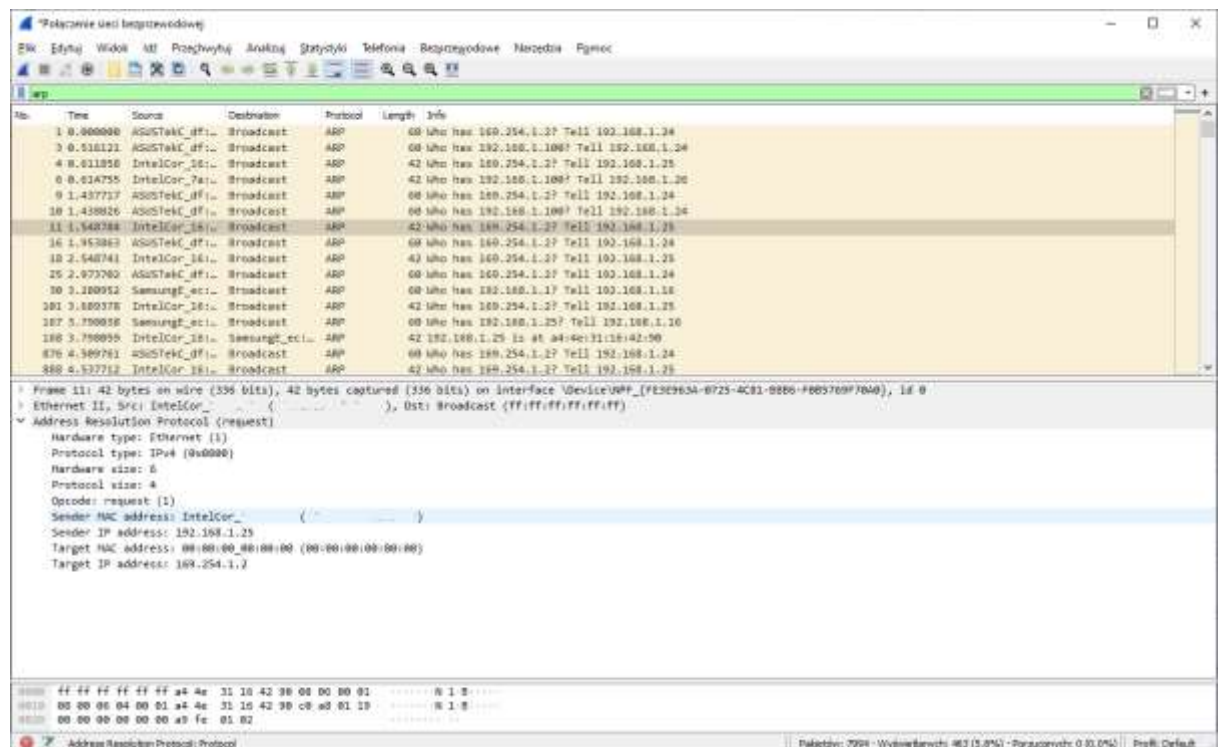


The Wireshark – filters and statistics

The filter under examination should allow to find the frames, which has been send by (from) used (our) computer

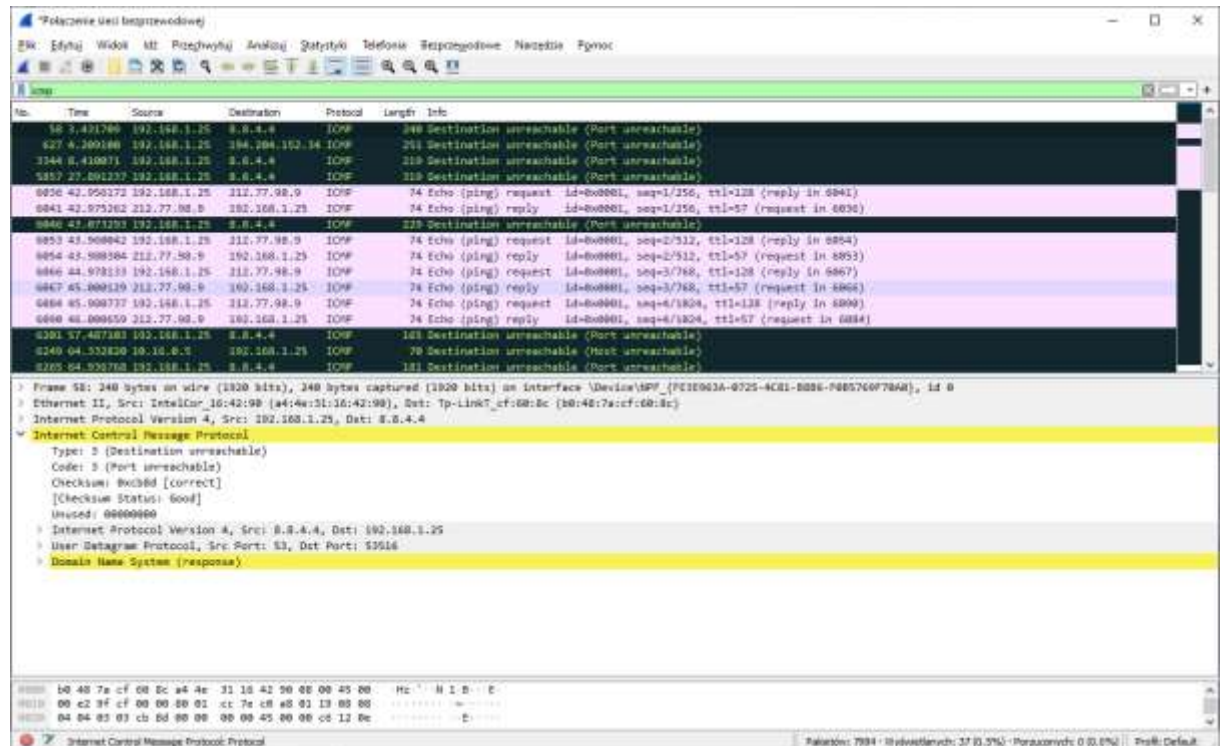


The filter under examination should allow to find the frames, in which arp protocol was apply

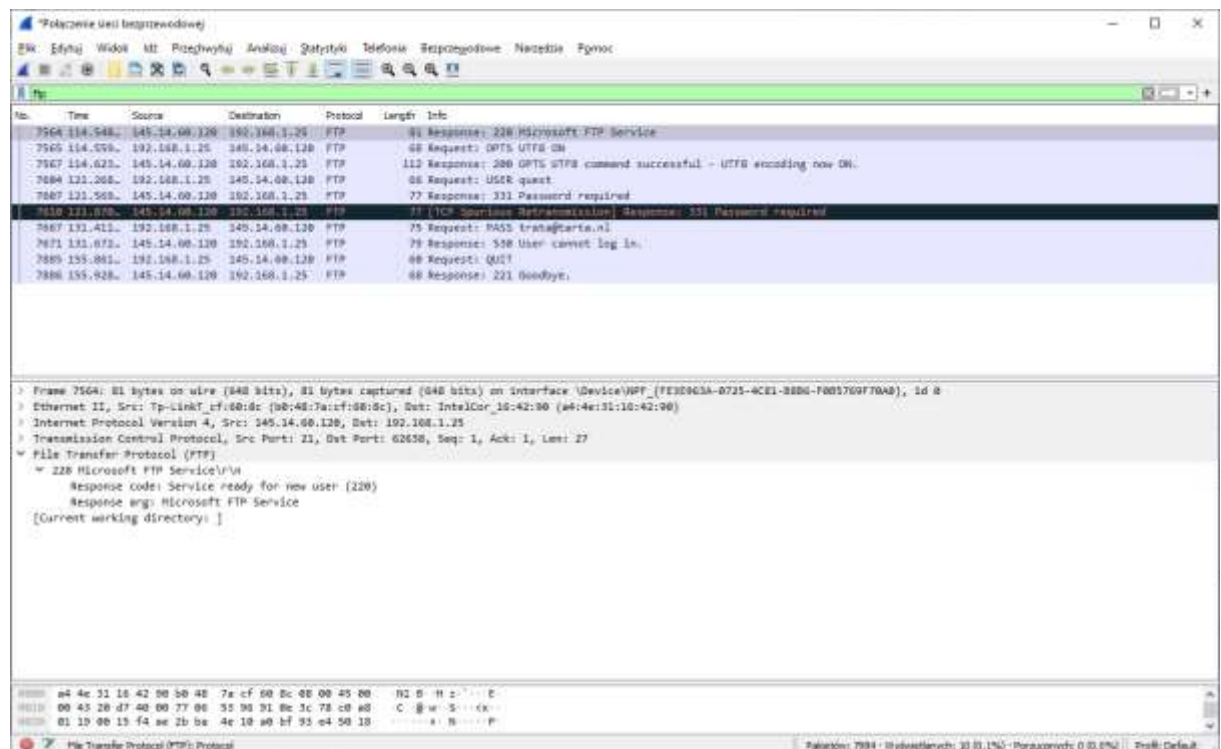


The Wireshark – filters and statistics

The filter under examination should allow to find the frames, in which icmp protocol was apply

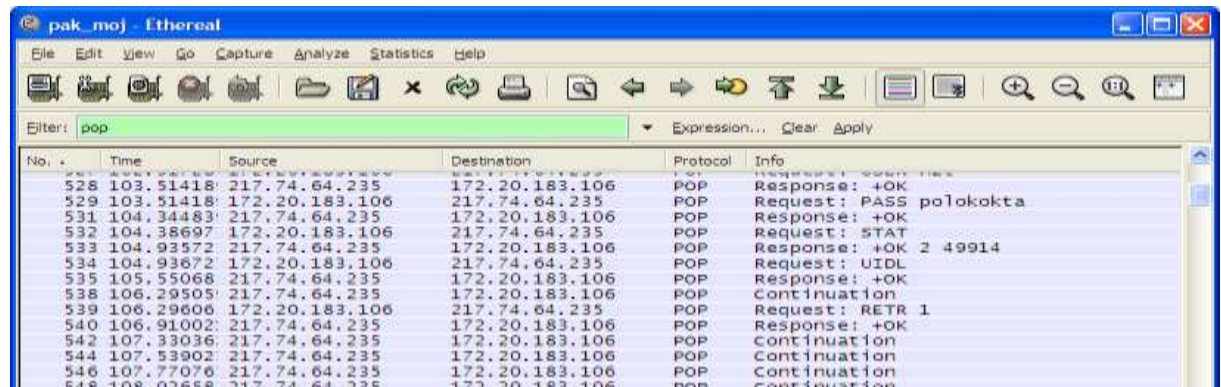


The filter under examination should allow to find the frames, in which ftp protocol was apply



The Wireshark – filters and statistics

The filter under examination should allow to find the frames, in which pop protocol was apply



The filter under examination should allow to find the frames, in which smtp protocol was apply



The filter under examination should allow to find the frames, in which arp protocol was apply and has been send from used (our) computer

